

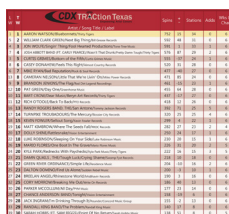
TRACtion Texas

#1

Cody Johnson
Wild As You
Cojo Music LLC

CONTENTS

Charts



PAGE 2-3

Monitored Panel List

PAGE 4

Available for Airplay

PAGE 5

Chart Breakouts

PAGE 6



The TRACtion Texas weekly newsletter is published on Tues. evenings by CDX, Inc. — Connecting the music industry with Texas Red Dirt radio. For more information call 615-292-0123 or email chart director Jessie Scott-jessiescott@cdxcd.com

A Quick Refresher on Fingerprinting



Hey Kiddos;

Man, it doesn't seem possible that it has been a year! As we come up on the first anniversary of the CDX TRACtion Texas chart, I wanted to do a bit of a refresher course as to how our technology works. We fingerprint each new song that comes in to us with a proprietary technique that allows for us to be sure we are crediting a full play of the song, not just a snippet that might be used as part of a commercial or promo. It is really important that you remember that we cannot detect spins if you don't send us the music. You are welcome to upload your MP3's to www.tractiontx.com/upload-center/ or email them to mark@cdxcd.com for fingerprinting. There is no charge for this. Our chart's accuracy depends on you sharing the music with us. If we don't know it is out, we cannot track it for detection of spins. In a related issue, having your add date to us in the office, in advance, really helps us keep track of things, as well. Send Going For Adds dates to me at jessiescott@cdxcd.com. It really helps us know what is going on. Don't forget we would love to send your music via digital distribution to radio. We still charge only \$150 for that, which is a cost-efficient way to reach decision makers at the radio stations in the Texas Red Dirt world.

Congrats on this week's chart, goes to Cody Johnson who is at week 7 at #1. The Highest Debut is Kylie Frey with Randy Rogers. Most Added and Greatest Gainer honors goes to Pat Green. Carry On!

Looking forward,
Jessie Scott


jessiescott@cdxcd.com

TRACtion Texas Chart Director



SIX SANCHEZ
THE DEBUT SINGLE
"DANCE IN THE RAIN"
GOING FOR ADDS NOW!!

"SIX SANCHEZ HAS A GREAT, SOULFUL DELIVERY THAT REALLY TRANSLATES - SORT OF A TIMELESS THROWBACK TO VERN AND CONWAY AND ALL THE GREAT STUFF THAT'S MISSING ON THE RADIO THESE DAYS. I FEEL LIKE THIS ALBUM FILLS A HOLE IN THE MARKET, AND I'M PROUD TO BE A PART OF IT." - TRENT WILLMON

L W	T W	TRAction  Empowering Artist Careers Artist / Song Title / Label	Spins	+ -	Stations	Adds	Wks On Chart
1	1	CODY JOHNSON/Wild As You/Cojo Music LLC	667	2	31	1	13
2	2	KYLE PARK/Don't Forget Where You Come From/Kyle Park Music	498	-9	34	1	16
3	3	FLATLAND CAVALRY (FT. KAITLIN BUTTS)/A Life Where We Work Out/Flatland Cavalry Music	485	24	28	0	22
5	4	CURTIS GRIMES/Right About Now/Curtis Grimes Music	472	58	35	2	12
4	5	JOSH WARD/Change My Mind/Buckshot Records	465	31	30	0	9
6	6	SAM RIGGS/Second Hand Smoke/Deep Creek Records	453	52	28	0	15
7	7	WHISKEY MYERS/Stone/Wiggy Thump Records	440	45	24	0	15
12	8	PAT GREEN/Drinkin' Days/Greenhorse Music	384	83	28	8	5
10	9	JAMIE RICHARDS/When You Love Somebody/Jamie Richards Music	383	40	24	0	14
9	10	DREW FISH/Sounds Like A Plan/Drew Fish Band Music	346	1	21	0	20
11	11	JON WOLFE/Baby This And Baby That/Fool Hearted Productions	327	4	28	2	10
8	12	ZANE WILLIAMS/Hello World/Texas Like That Records	313	-35	27	0	18
13	13	TROY CARTWRIGHT/Nobody But You/Hard Luck Recording Company/Troy Cartwright Music	269	20	24	0	15
--	14	KYLIE FREY (FT. RANDY ROGERS)/Too Bad/Deep Frey'd	257	-5	23	1	1
14	15	DALTON DOMINO/Mine Again (I'd Be A Fool)/Lightning Rod Records	252	22	18	1	10
16	16	SHOTGUN RIDER/Sunlight/Torrez Music Group	191	2	16	3	14
23	17	GRANGER SMITH/Happens Like That/Wheelhouse (BBRMG)	185	46	16	5	4
18	18	JESSE RAUB JR/She'll Put The Hurt On You/Jesse Raub Jr. Music	183	0	19	2	12
20	19	JOHN BAUMANN/The Trouble With Drinkin'/Golden Spread Music	181	17	12	2	8
21	20	JASON CASSIDY/River Floatin'/JC Music	174	18	16	1	13
24	21	BRANDON RHYDER/They Need Each Other/Brandon Rhyder Music	165	29	12	4	7
19	22	BRUCE ROBISON/Rock and Roll Honky Tonk Ramblin' Man/Motel Time Music	151	-13	11	0	13
22	23	SHANE SMITH AND THE SAINTS/New Orleans/Geronimo Records	145	-3	11	0	4
17	24	STATESBORO REVUE, THE/Satisfied/Vision Entertainment	142	-42	18	0	21
15	25	CASE HARDIN/Deep Blue Me/Case Hardin Music	139	-52	15	0	23
25	26	CODY WAYNE/Fly High/Broken String	115	-15	16	0	12
29	27	AARON COPELAND/Here She Comes/Aaron Copeland Music	115	11	11	0	11
28	28	BRADLEY BANNING/Don't Mess With Texas/Bradley Banning Music	111	0	12	1	18
30	29	MARIO FLORES/Lonestar Heaven/Mario Flores Music	110	9	12	2	12
27	30	BAND OF HEATHENS, THE/Trouble Came Early/BOH Records	109	-4	15	0	21

TRAction Texas Chart Newsletter Rates

Share Your Good News Through Us



TRAction Texas Full Page Ad

7.5 x 9.75 inches

CDX Distributed Client Rate: **\$750.00**
for a one week run

CDX Non-Distributed Client: **\$1,000.00**
for a one week run



TRAction Texas Banner Ad

7.5 x 2.76 inches

CDX Client Rate:
1 Week: **\$250.00**
4 Week: **\$800.00**

CDX Non-Client Rate:
1 Week: **\$300.00**
4 Week: **\$1,000.00**


TRAction Texas Digital Download & Ad Combo


1 Week: \$400.00


- Digital download release
- Newsletter banner ad


File Requirements

Resolution: At least 150 dpi
Formats: JPG, PDF, PNG

L W	T W	TRAction  Texas Empowering Artist Careers Artist / Song Title / Label	Spins	+ -	Stations	Adds	Wks On Chart
26	31	AUSTIN MEADE/Courage To Talk/Austin Meade Music	109	-7	9	0	16
31	32	CALLAHAN DIVIDE/Holy Holly/Callahan Divide Music	94	3	5	0	11
32	33	STEVEN JAMES & THE JADED/Dance With Me Tonight/Steven James & The Jaded Music	90	12	6	2	7
45	34	BART CROW/City Limit Signs/Beryn Art Records	89	47	9	6	2
33	35	NATALIE ROSE/Conformity/Natalie Rose Music	82	6	11	1	5
34	36	COREY HUNT BAND/Song About Saturday Night/Super Secret Independent Records	77	2	6	1	8
49	37	JUNIOR GORDON/Armadillo/Junior Gordon Music	72	38	7	3	2
36	38	JAMES COOK/Flat Foolish and Despised/James Cook Music	71	9	3	0	7
35	39	ROBERT RAY/Can't Play Strait/Big R.I.G. Country, LLC	69	6	6	0	9
37	40	DRAKE HAYES BAND/Grow Old With You/Drake Records	67	10	8	1	10
38	41	RAY JOHNSTON BAND (FT. BRADY BLACK)/Watching the Lord Turn on the Lights/Lil Dude Records	50	-2	5	0	24
42	42	AARON EINHOUSE/The Richest Man/Aaron Einhouse Music	49	2	3	0	5
43	43	PAULINE REESE/Save Your Breath/Pauline Reese Enterprises	48	6	6	0	6
46	44	KIRK BAXLEY/Moving On/Kirk Baxley Music	48	6	4	0	3
41	45	DRUGSTORE GYPSIES, THE/Runnin' To/Edgewater Music Group	45	-2	5	0	16
44	46	DIRTY RIVER BOYS/Down By The River/DRB Music	45	3	5	0	5
--	47	CODY SPARKS BAND/No Time/Cody Sparks Band Music	45	14	3	0	1
--	48	MARK MCKINNEY/Rainy Day Money/Texas Evolution	41	20	5	3	1
40	49	SEAN MCCONNELL/Ghost Town/New Rounder	41	-6	5	0	7
47	50	BRETT HENDRIX/Summertime Queen/Brett Hendrix Music	41	0	3	0	12

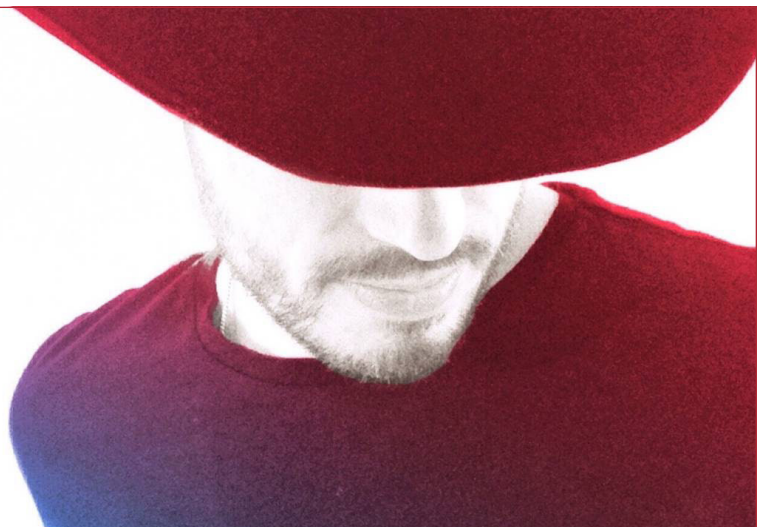
Number 1 = 

Most Added = 

Spin Gainer = 

Bubbling Under	Position
JAKE WARD/Restless/Jake Ward Music	51
RODNEY CROWELL (FEAT. ROSANNE CASH & JOHN PAUL WHITE)/It Ain't Over Yet/New West Records	52
BUFFALO RUCKUS, THE/Born To Die/Shiner Records	53
WILL HOGE/Little Bit Of Rust/EDLO Records	54
MIKE AND THE MOONPIES/Mockingbird/Smith Music Group	55
JASON YOUNG/Under My Skin/Jason Young Music	56
AMERICAN AQUARIUM (LIVE RADIO EDIT)/Northeast Texas Women/American Aquarium Music	57
JAMIE TALBERT AND THE BAND OF DEMONS/Wildfire/Jamtal Records	58
ZAC STOKES/Ridin' Solo/Zac Stokes Music	59
JOSH FULLER BAND/Float/indieExtreme/Fuller Ray Productions	60

**DON'T MESS
WITH TEXAS**
BRADLEY BANNING
TOP 30 AND CLIMBING



TRACtion : Texas Monitored Stations

KABW-FM	Abilene, TX	KITX-FM	Hugo, OK	KQZQ-FM	Kiowa, KS	KUSQ-FM	Worthington, MN
KACQ-FM	Lometa, TX	KJDL-FM	Levelland, TX	KRVF-FM	Kerens, TX	<u>KVST-FM</u>	<u>Montgomery, TX</u>
KBSO-FM	Corpus Christi, TX	KKAJ-FM	Ardmore, OK	KRVN-FM	Lexington, NE	KVWF-FM	Wichita, KS
KBST-FM	Big Spring, TX	KKCN-FM	San Angelo, TX	KSAM-FM	Huntsville, TX	KWOX-FM	Woodward, OK
KERP-FM	Dodge City, KS	<u>KKDT-FM</u>	<u>Burdett, KS</u>	KSCH-FM	Sulphur Springs, TX	KXKZ-FM	Ruston, LA
KFLP-FM	Floydada, TX	KMRK-FM	Odessa, TX	<u>KSCN-FM</u>	<u>Pittsburg, TX</u>	KYKM-FM	Yoakum, TX
KFTX-FM	Corpus Christi, TX	KNUE-FM	Tyler, TX	KSNY-FM	Snyder, TX	KYKS-FM	Lufkin, TX
KFWR-FM	Ft. Worth, TX	KOKE-FM	Austin, TX	KSTV-FM	Dublin, TX	KYKX-FM	Longview, TX
KFYN-FM	Paris, TX	<u>KOLI-FM</u>	<u>Wichita Falls, TX</u>	KTCS-FM	Ft. Smith, AR	KYYK-FM	Palestine, TX
KGVL-AM	Greenville, TX	KORA-FM	Bryan, TX	<u>KTCU-FM</u>	<u>Ft. Worth, TX</u>		
KHKX-FM	Odessa, TX	KOKE-FM	Brownwood, TX	KTFW-FM	Ft. Worth, TX		
KHLB-FM	Mason, TX	KOYN-FM	Paris, TX	KTTX-FM	Brenham, TX		
KHYI-FM	Howe, TX	KPUR-FM	Canyon, TX	KTXM-FM	Hallettsville, TX		
KIKK-FM (HD2)	Houston, TX	KQSC-AM	Colorado Springs, CO	KUSH-AM	Cushing, OK		

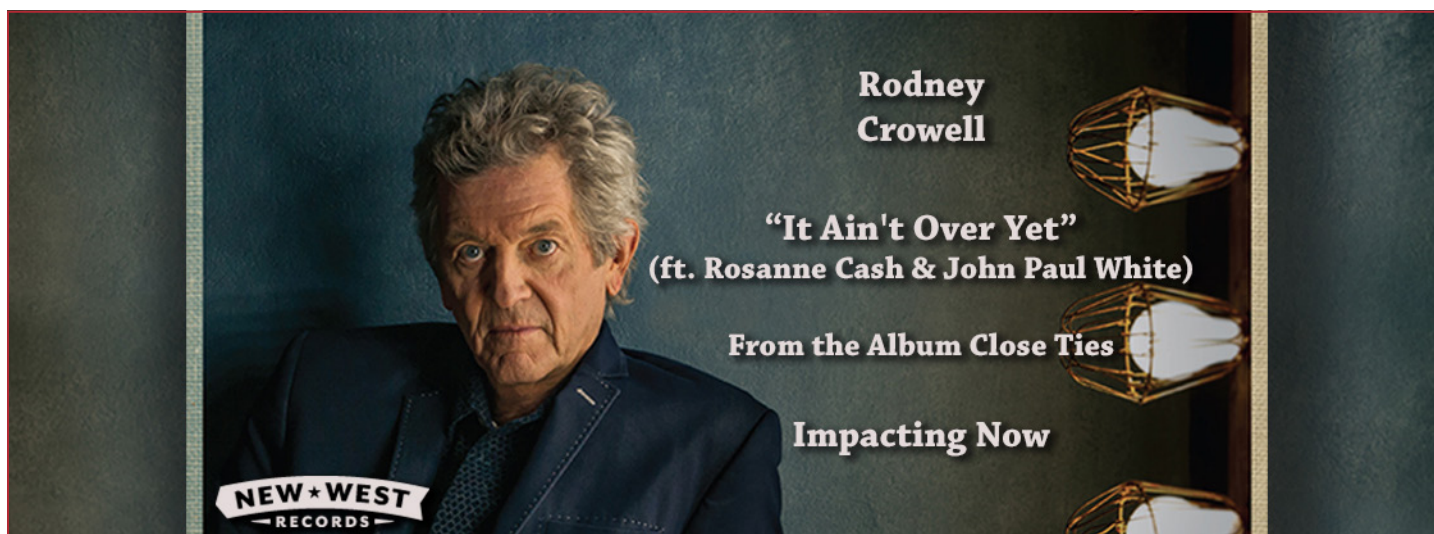
Strikethrough = Removed Bold = Newly Added Underlined = Frozen this Week Double Underlined = Frozen 2 Weeks

TRACtion only recognizes detections on songs that have been “fingerprinted.” We do our best to obtain and fingerprint all new releases; songs serviced through CDX are encoded automatically. Send a song MP3 file with title, artist, label, and add date to <https://spaces.hightail.com/uplink/tractiontx> for fingerprinting.

Going for Adds

Date	Artist / Song Title / Label
June 29th	JERRETT ZOCH & THE OSR BAND/Sippin' On Shine/JZOSRB KEVIN FOWLER/Movin' On/Kevin Fowler Records DAVID LEE/John Wayne/Jose Armadillo Productions RICHARD LYNCH/Cut and Paste/Fence Row Records
June 30th	JOSH ABBOTT/Texas Women, Tennessee Whiskey/Pretty Damn Tough Records
July 7th	JULIA HATFIELD/He's Just Not that Into You/Julia Hatfield Music

Sign up for our weekly newsletter, which includes the CDX TRACtion Texas Chart at www.tractiontx.com.



Music Available from the CDX Digital Download Center

[John Hord/More Than I'm Used To](#)
[BRutherz/See Clearly in the Dark](#)
[Reid Farris/Don't Want To Want You](#)
[Bruce Robison/MRock and Roll Honky Tonk Ramblin' Man](#)
[Justin Kemp Band/Still Breathin'](#)
[Callahan Divide/Holy Holly](#)
[Bryan Adam Joyner/Beer Tastes Better With You](#)
[Natalie Rose/Conformity](#)
[Jenni Dale Lord Band/Country Rock and Roll](#)
[Jeff Jacobs Band/Break His Heart Tonight](#)
[Darrin Morris Band/Where Will I Be](#)
[BRutherz/Without You Where Would I Be](#)
[Bubba T.'s Honky Tonk Revival/Drink All Day](#)
[Bannon Hancock/Carry Us On Through](#)
[Jared LoStracco/Small Town Texas](#)
[Porter Union/Don't You Know](#)
[The Warhorses/Last Goodbye](#)
[Seth James & Jessica Murray/I Need You](#)

If you need access to the CDX Digital Download Center, please send an email request to Joe Kelly at joe@cdxcd.com.



Josh Ward visited **Hank FM** in **Fort Worth** prior to his debut at **Billy Bobs Texas**, Josh also did an interview with **Crowman** for **Sunday Morning Coming Down**.



Jake Worthington with **KUSQ FM (Worthington, MN) Program Director Barry Roberts**



(L-R) **Darrin Morris, Boston Chris and Louise Leone of ETX Rocks and John Hord** all gathered at **KYKX in Longview** to meet the new morning show crew!

CDX TRACTION Texas offers digital distribution of new Texas Red Dirt music to all key radio programming decision makers, labels, publishing companies and music business execs. If you would like credentials to our proprietary InstaTrack download delivery system, please contact Joe Kelly (joe@cdxcd.com) or Jessie Scott (jessiescott@cdxcd.com) 615-292-0123.



JOHN HORD
MORE THAN I'M USED TO

AVAILABLE NOW

More Than I'm Used To
JOHN HORD

Most Added	Adds
PAT GREEN/Drinkin' Days Greenhorse Music	8
BART CROW/City Limit Signs Beryn Art Records	6
GRANGER SMITH/Happens Like That Wheelhouse (BBRMG)	5
BRANDON RHYDER/They Need Each Other Brandon Rhyder Music	4
SHOTGUN RIDER/Sunlight Torrez Music Group	3
JUNIOR GORDON/Armadillo Junior Gordon Music	3
MARK MCKINNEY/Rainy Day Money Texas Evolution	3
CURTIS GRIMES/Right About Now Curtis Grimes Music	2
JON WOLFE/Baby This And Baby That Fool Hearted Productions	2
JESSE RAUB JR./She'll Put The Hurt On You Jesse Raub Jr. Music	2

Greatest Spin Gainers	Increase
PAT GREEN/Drinkin' Days Greenhorse Music	83
CURTIS GRIMES/Right About Now Curtis Grimes Music	58
SAM RIGGS/Second Hand Smoke Deep Creek Records	52
BART CROW/City Limit Signs Beryn Art Records	47
GRANGER SMITH/Happens Like That Wheelhouse (BBRMG)	46
WHISKEY MYERS/Stone Wiggy Thump Records	45
JAMIE RICHARDS/When You Love Somebody Jamie Richards Music	40
JUNIOR GORDON/Armadillo Junior Gordon Music	38
JOSH WARD/Change My Mind Buckshot Records	31
BRANDON RHYDER/They Need Each Other Brandon Rhyder Music	29

Chart Recurrent Methodology

When does a song move to recurrent on the chart? It is one of the more challenging issues we encountered in creating the CDX TRACtion Texas chart system. Rather than relying on subjective editorial decisions, we've chosen to automate this process using the weekly chart data as a marker.

We strive to avoid having singles past their prime create a logjam on the chart, because that stifles upward momentum for up-and-coming singles. But we also try to ensure that singles "on the bubble" are not removed prematurely. As long-time chart watchers know, singles often take a while to establish a solid base among early believers at radio before they truly find their legs. Due to any number of reasons, the path to peak chart position rarely includes straight-line, week-over-week spin and/or chart position growth.

On a monitored airplay chart like CDX TRACtion Texas, the reality is that new singles bounce around a bit spin-wise and position-wise, particularly in the lower half of the chart. Even small spin increases and decreases can be magnified as fairly significant up-or-down chart position moves.

With this in mind, the CDX TRACtion Texas recurrent policy grades each chart position on a curve, using an algorithm that considers the chart position and spin history for that song. Newly serviced singles are allowed 20 weeks to chart before being removed from chart consideration. Once a status change is actively being considered by the algorithm, the cumulative amount of spin loss from the single's previous peak spin count is the trigger. The allowable spin loss varies as a percentage, depending on the chart position.

In addition to making sure that only singles with significant downward movement become recurrent, this methodology also benefits slow-developing singles in several ways. For instance, the allowable spin loss (as a percentage) is very generous at the lower reaches of the chart to accommodate the lower spin counts. Additionally, if a single is at risk of being moved to recurrent status with two consecutive weeks of minor spin loss, it can still return to positive spin growth the following week, which will reset the clock.

TRACtion Texas Digital Delivery Specs

Let Us To Send Your Project To Texas Red Dirt Radio And Beyond



Email Blast Image

Format: Square Shape
Preferred Size: 1500x1500px
Minimum Size: 600x600px
Preferred File Format: jpg

Other Requirements

Bio copy (115 words)
.wav file of song

\$150.00 per digital delivery of your song
Upload at www.tractiontx.com