

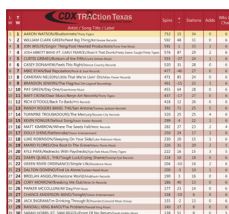
# TRACtion Texas

**#1**

**Cody Johnson**  
Wild As You  
Cojo Music LLC

## CONTENTS

### Charts



PAGE 2-3

Monitored Panel List

PAGE 4

Available for Airplay

PAGE 5

Chart Breakouts

PAGE 6



The TRACtion Texas weekly newsletter is published on Tues. evenings by CDX, Inc. — Connecting the music industry with Texas Red Dirt radio. For more information call [615-292-0123](tel:615-292-0123) or email chart director Jessie Scott-[jessiescott@cdxcd.com](mailto:jessiescott@cdxcd.com)

## Visit It City!



### Hey Kiddos;

It is a remarkable week of colossal crowds colliding as the Nashville Predators have tied up the Stanley Cup Series with two games each vs The Pittsburgh Penguins. Since this is the first time the team has made it into Stanley Cup play, the entire town seems to be going whole hog wild in love with them. A veritable army of yellow team jerseys can be spotted among the throngs here attending CMA Fest 2017. Yes, you know this is the week that fans come from far and wide to celebrate Country music. And then just add the Alt, Jam Band and Indie crowds for Bonnaroo, set to hit the ground running this Thursday just south of Nashville in Manchester, TN, and I would say we are at full boat. I hope you are coming to Nashville this week for any of the above reasons. There are a bunch of Texas Red Dirt artists that will be here performing, and we just know they will be crowd pleasers! Now if we could just get some restaurants that do Tex Mex and especially Texas barbecue, I would be a very happy girl.

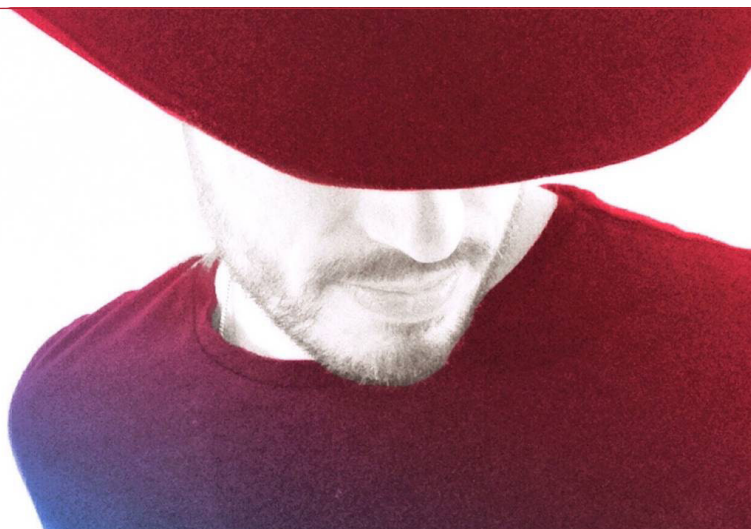
The chart keeps chugging along. On to this week's competition! CDX TRACtion Texas congratulates Cody Johnson on his fourth week at #1. This week's highest chart debut is Shane Smith & The Saints. Pat Green bags a double with most added and greatest gainer. And we are off to rock and roll. Smashville rules.


Looking forward,  
**Jessie Scott**

[jessiescott@cdxcd.com](mailto:jessiescott@cdxcd.com)

TRACtion Texas Chart Director

**DON'T MESS  
WITH TEXAS  
BRADLEY BANNING**  
**\*TOP 30 AND CLIMBING\***



L W	T W	TRAction  Texas Empowering Artist Careers Artist / Song Title / Label	Spins	+ -	Stations	Adds	Wks On Chart
1	1	CODY JOHNSON/Wild As You/Cojo Music LLC	685	25	32	1	10
2	2	KYLE PARK/Don't Forget Where You Come From/Kyle Park Music	556	9	34	1	13
3	3	FLATLAND CAVALRY (FT. KAITLIN BUTTS)/A Life Where We Work Out/Flatland Cavalry Music	502	-12	30	0	19
5	4	SAM RIGGS/Second Hand Smoke/Deep Creek Records	450	-12	29	0	12
7	5	WHISKEY MYERS/Stone/Wiggy Thump Records	441	-7	26	1	12
6	6	WILLIAM CLARK GREEN/Creek Don't Rise/Bill Grease Records	439	-14	33	0	15
9	7	CURTIS GRIMES/Right About Now/Curtis Grimes Music	436	10	33	1	9
4	8	CODY JINKS/Wish You Were Here/Cody Jinks Music/Thirty Tigers	431	-42	30	0	16
10	9	JOSH WARD/Change My Mind/Buckshot Records	394	11	30	1	6
11	10	DREW FISH/Sounds Like A Plan/Drew Fish Band Music	381	-1	25	0	17
8	11	ZANE WILLIAMS/Hello World/Texas Like That Records	379	-51	30	0	15
12	12	JAMIE RICHARDS/When You Love Somebody/Jamie Richards Music	324	-7	24	1	11
13	13	JON WOLFE/Baby This And Baby That/Fool Hearted Productions	300	13	26	2	7
14	14	TROY CARTWRIGHT/Nobody But You/Hard Luck Recording Company/Troy Cartwright Music	282	4	23	1	12
15	15	CASE HARDIN/Deep Blue Me/Case Hardin Music	250	-2	22	0	20
18	16	JESSE RAUB JR/She'll Put The Hurt On You/Jesse Raub Jr. Music	219	5	18	1	9
16	17	STATESBORO REVUE, THE/Satisfied/Vision Entertainment	218	-4	21	0	18
19	18	JASON CASSIDY/River Floatin'/JC Music	205	2	17	0	10
17	19	DUSTIN SONNIER/People Like Me/Dustin Sonnier Music	200	-21	15	0	21
20	20	SHOTGUN RIDER/Sunlight/Torrez Music Group	188	0	12	1	11
44	21	PAT GREEN/Drinkin' Days/Greenhorse Music	179	127	10	7	2
21	22	DALTON DOMINO/Mine Again (I'd Be A Fool)/Lightning Rod Records	170	4	14	0	7
24	23	BRADLEY BANNING/Don't Mess With Texas/Bradley Banning Music	152	1	11	0	15
26	24	BRUCE ROBISON/Rock and Roll Honky Tonk Ramblin' Man/Motel Time Music	147	6	8	0	10
25	25	CODY WAYNE/Fly High/Broken String	145	-2	15	0	9
23	26	AUSTIN MEADE/Courage To Talk/Austin Meade Music	144	-9	13	0	13
22	27	BAND OF HEATHENS, THE/Trouble Came Early/BOH Records	136	-24	17	0	18
27	28	BRANDON RHYDER/They Need Each Other/Brandon Rhyder Music	115	4	8	1	4
--	29	SHANE SMITH AND THE SAINTS/New Orleans/Geronimo Records	108	77	7	6	1
28	30	AARON COPELAND/Here She Comes/Aaron Copeland Music	107	2	12	3	8

## TRAction Texas Chart Newsletter Rates

Share Your Good News Through Us



### TRAction Texas Full Page Ad

7.5 x 9.75 inches

CDX Distributed Client Rate: **\$750.00**  
for a one week run

CDX Non-Distributed Client: **\$1,000.00**  
for a one week run



### TRAction Texas Banner Ad

7.5 x 2.76 inches

CDX Client Rate:  
1 Week: **\$250.00**  
4 Week: **\$800.00**

CDX Non-Client Rate:  
1 Week: **\$300.00**  
4 Week: **\$1,000.00**


### TRAction Texas Digital Download & Ad Combo


1 Week: \$400.00


- Digital download release
- Newsletter banner ad


### File Requirements

Resolution: At least 150 dpi  
Formats: JPG, PDF, PNG

L W	T W	TRAction  Texas Empowering Artist Careers Artist / Song Title / Label	Spins	+ -	Stations	Adds	Wks On Chart
29	31	JOHN BAUMANN/The Trouble With Drinkin'/Golden Spread Music	105	8	11	2	5
31	32	MARIO FLORES/Lonestar Heaven/Mario Flores Music	98	10	11	2	9
33	33	ROBERT RAY/Can't Play Strait/Big R.I.G. Country, LLC	94	16	8	2	6
30	34	STEVEN JAMES & THE JADED/Dance With Me Tonight/Steven James & The Jaded Music	92	0	6	1	4
--	35	GRANGER SMITH/Happens Like That/Wheelhouse (BBRMG)	88	88	4	4	1
32	36	CALLAHAN DIVIDE/Holy Holly/Callahan Divide Music	86	1	6	0	8
36	37	COREY HUNT BAND/Song About Saturday Night/Super Secret Independent Records	85	23	5	0	5
37	38	PAULINE REESE/Save Your Breath/Pauline Reese Enterprises	84	23	9	1	3
34	39	DRAKE HAYES BAND/Grow Old With You/Drake Records	71	1	7	0	7
41	40	NATALIE ROSE/Conformity/Natalie Rose Music	69	13	8	1	2
35	41	MIKE AND THE MOONPIES/Mockingbird/Smith Music Group	66	1	5	0	26
39	42	DRUGSTORE GYPSIES, THE/Runnin' To/Edgewater Music Group	64	5	5	0	13
40	43	SCOTT TAYLOR BAND/Beautiful Sin/Scott Taylor Band	62	4	6	0	9
43	44	RAY JOHNSTON BAND (FT. BRADY BLACK)/Watching the Lord Turn on the Lights/Lil Dude Records	60	6	5	0	21
50	45	AARON EINHOUSE/The Richest Man/Aaron Einhouse Music	59	16	4	1	2
48	46	JAMES COOK/Flat Foolish and Despised/James Cook Music	58	14	3	1	4
38	47	BRETT HENDRIX/Summertime Queen/Brett Hendrix Music	56	-5	5	0	9
45	48	BELLAMY BROTHERS, THE/After The Storm/Raise Em Up Records/Nandar Entertainment	55	4	5	0	4
--	49	DIRTY RIVER BOYS/Down By The River/DRB Music	51	15	5	2	2
46	50	THOMAS MICHAEL RILEY/Between the Tic 'n the Tock/Thomas Michael Riley Music	49	1	6	0	5

Number 1 = 

Most Added = 

Spin Gainer = 

Bubbling Under	Position
RODNEY CROWELL (FEAT. ROSANNE CASH & JOHN PAUL WHITE)/It Ain't Over Yet/New West Records	51
BUFFALO RUCKUS, THE/Born To Die/Shiner Records	52
JAMIE TALBERT AND THE BAND OF DEMONS/Wildfire/Jamtal Records	53
CODY SPARKS BAND/No Time/Cody Sparks Band Music	54
AMERICAN AQUARIUM (LIVE RADIO EDIT)/Northeast Texas Women/American Aquarium Music	55
KIRK BAXLEY/Moving On/Kirk Baxley Music	56
JEFF JACOBS BAND/Break His Heart Tonight/Jeff Jacobs Band Music	57
JEREMY STEDING/Feels So Good To Be Back Home/Jeremy Steding Music	58
SEAN MCCONNELL/Ghost Town/New Rounder	59
TANNER FENOGLIO/This Ain't The Movies/Tanner Fenoglio Music	60



## TRACtion : Texas Monitored Stations

KABW-FM	Abilene, TX	KITX-FM	Hugo, OK	KQSC-AM	Colorado Springs, CO	KUSH-AM	Cushing, OK
KACQ-FM	Lometa, TX	<u>KJDL-FM</u>	<u>Levelland, TX</u>	KQZQ-FM	Kiowa, KS	KUSQ-FM	Worthington, MN
KBSO-FM	Corpus Christi, TX	KKAJ-FM	Ardmore, OK	KRVF-FM	Kerens, TX	KVST-FM	Montgomery, TX
KBST-FM	Big Spring, TX	KKCN-FM	San Angelo, TX	KRVN-FM	Lexington, NE	KVWF-FM	Wichita, KS
KERP-FM	Dodge City, KS	KKDT-FM	Burdett, KS	KSAM-FM	Huntsville, TX	KWOX-FM	Woodward, OK
KFLP-FM	Floydada, TX	KMRK-FM	Odessa, TX	KSCH-FM	Sulphur Springs, TX	KXKZ-FM	Ruston, LA
<u>KFTX-FM</u>	<u>Corpus Christi, TX</u>	KNUE-FM	Tyler, TX	KSCN-FM	Pittsburg, TX	KYKM-FM	Yoakum, TX
KFWR-FM	Ft. Worth, TX	<u>KOKE-FM</u>	<u>Austin, TX</u>	KSNY-FM	Snyder, TX	KYKS-FM	Lufkin, TX
KFYN-FM	Paris, TX	KOLI-FM	Wichita Falls, TX	KSTV-FM	Dublin, TX	KYKX-FM	Longview, TX
KGVL-AM	Greenville, TX	KORA-FM	Bryan, TX	KTCS-FM	Ft. Smith, AR	<u>KYYK-FM</u>	<u>Palestine, TX</u>
KHKX-FM	Odessa, TX	<u>KOUL-FM</u>	<u>Benavides, TX</u>	KTCU-FM	Ft. Worth, TX		
KHLB-FM	Mason, TX	KOXE-FM	Brownwood, TX	KTFW-FM	Ft. Worth, TX		
KHYI-FM	Howe, TX	KOYN-FM	Paris, TX	KTTX-FM	Brenham, TX		
KIKK-FM (HD2)	Houston, TX	KPUR-FM	Canyon, TX	KTXM-FM	Hallettsville, TX		

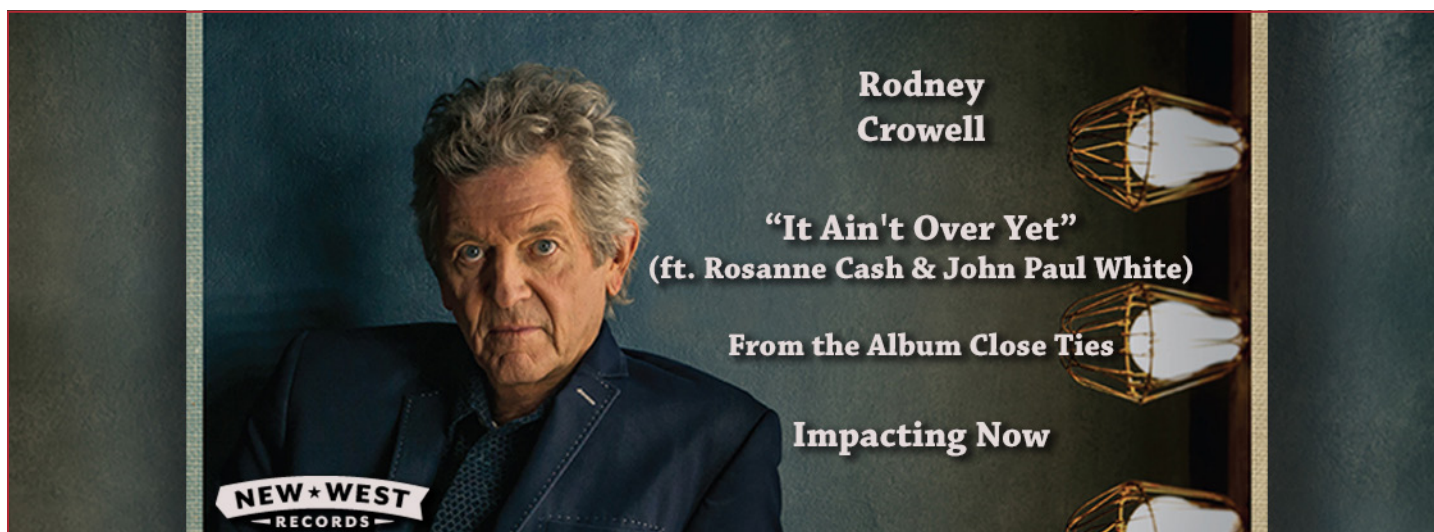
Strikethrough = Removed    Bold = Newly Added    Underlined = Frozen this Week    Double Underlined = Frozen 2 Weeks

TRACtion only recognizes detections on songs that have been “fingerprinted.” We do our best to obtain and fingerprint all new releases; songs serviced through CDX are encoded automatically. Send a song MP3 file with title, artist, label, and add date to <https://spaces.hightail.com/uplink/tractiontx> for fingerprinting.

## Going for Adds

Date	Artist / Song Title / Label
<b>June 11th</b>	GRANGER SMITH/Happens Like That/Wheelhouse Records
<b>June 12th</b>	BART CROW/City Limit Signs/Drift Ring Music
<b>June 19th</b>	PARKER MCCOLLUM/I Can't Breathe/PYM Music
<b>June 26th</b>	ROD MELANCON/Red Head/Blue Elan Records RANDY ROGERS BAND/Meet Me Tonight/Tommy Jackson Records HOLLY TUCKER/Dallas On Your Boots/M&D Records/Smith Entertainment

Sign up for our weekly newsletter, which includes the CDX TRACtion Texas Chart at [www.tractiontx.com](http://www.tractiontx.com).



## Music Available from the CDX Digital Download Center

[Miles Williams/She Calls Me Daddy](#)  
[Justin Kemp Band/Don't Let Me Go](#)  
[John Hord/More Than I'm Used To](#)  
[BRutherz/See Clearly in the Dark](#)  
[Reid Farris/Don't Want To Want You](#)  
[Bruce Robison/MRock and Roll Honky Tonk Ramblin' Man](#)  
[Justin Kemp Band/Still Breathin'](#)  
[Callahan Divide/Holy Holly](#)  
[Bryan Adam Joyner/Beer Tastes Better With You](#)  
[Natalie Rose/Conformity](#)  
[Jenni Dale Lord Band/Country Rock and Roll](#)  
[Jeff Jacobs Band/Break His Heart Tonight](#)  
[Darrin Morris Band/Where Will I Be](#)  
[BRutherz/Without You Where Would I Be](#)  
[Bubba T.'s Honky Tonk Revival/Drink All Day](#)  
[Bannon Hancock/Carry Us On Through](#)  
[Jared LoStracco/Small Town Texas](#)  
[Porter Union/Don't You Know](#)

If you need access to the CDX Digital Download Center, please send an email request to Joe Kelly at [joe@cdxcd.com](mailto:joe@cdxcd.com).



Colby Ericson from KVWF/Hank-FM in Wichita, KS and Bradley Banning.



Carly Evans from KORA/Bryan-College Station and Aaron Watson.



Jim Nash of KRVE/106.9 The Ranch – Corsicana, Trina Dillard and Aaron Watson.

CDX TRACTION Texas offers digital distribution of new Texas Red Dirt music to all key radio programming decision makers, labels, publishing companies and music business execs. If you would like credentials to our proprietary InstaTrack download delivery system, please contact Joe Kelly ([joe@cdxcd.com](mailto:joe@cdxcd.com)) or Jessie Scott ([jessiescott@cdxcd.com](mailto:jessiescott@cdxcd.com)) 615-292-0123.



JOHN HORD  
MORE THAN I'M USED TO

AVAILABLE NOW

**M**ore Than I'm Used To  
JOHN HORD

Most Added	Adds
PAT GREEN/Drinkin' Days Greenhorse Music	7
SHANE SMITH AND THE SAINTS/New Orleans Geronimo Records	6
GRANGER SMITH/Happens Like That Wheelhouse (BBRMG)	4
AARON COPELAND/Here She Comes Aaron Copeland Music	3
JON WOLFE/Baby This And Baby That Fool Hearted Productions	2
JOHN BAUMANN/The Trouble With Drinkin' Golden Spread Music	2
MARIO FLORES/Lonestar Heaven Mario Flores Music	2
ROBERT RAY/Can't Play Strait Big R.I.G. Country, LLC	2
DIRTY RIVER BOYS/Down By The River DRB Music	2
GARY KYLE/Tornado Gary Kyle Music	2

Greatest Spin Gainers	Increase
PAT GREEN/Drinkin' Days Greenhorse Music	127
GRANGER SMITH/Happens Like That Wheelhouse (BBRMG)	88
SHANE SMITH AND THE SAINTS/New Orleans Geronimo Records	77
CODY JOHNSON/Wild As You Cojo Music LLC	25
COREY HUNT BAND/Song About Saturday Night Super Secret Independent Records	23
PAULINE REESE/Save Your Breath Pauline Reese Enterprises	23
ROBERT RAY/Can't Play Strait Big R.I.G. Country, LLC	16
AARON EINHOUSE/The Richest Man Aaron Einhouse Music	16
DIRTY RIVER BOYS/Down By The River DRB Music	15
JOHNNY BUSH/I'll Be There BGM	15

## Chart Recurrent Methodology

When does a song move to recurrent on the chart? It is one of the more challenging issues we encountered in creating the CDX TRACtion Texas chart system. Rather than relying on subjective editorial decisions, we've chosen to automate this process using the weekly chart data as a marker.

We strive to avoid having singles past their prime create a logjam on the chart, because that stifles upward momentum for up-and-coming singles. But we also try to ensure that singles "on the bubble" are not removed prematurely. As long-time chart watchers know, singles often take a while to establish a solid base among early believers at radio before they truly find their legs. Due to any number of reasons, the path to peak chart position rarely includes straight-line, week-over-week spin and/or chart position growth.

On a monitored airplay chart like CDX TRACtion Texas, the reality is that new singles bounce around a bit spin-wise and position-wise, particularly in the lower half of the chart. Even small spin increases and decreases can be magnified as fairly significant up-or-down chart position moves.

With this in mind, the CDX TRACtion Texas recurrent policy grades each chart position on a curve, using an algorithm that considers the chart position and spin history for that song. Newly serviced singles are allowed 20 weeks to chart before being removed from chart consideration. Once a status change is actively being considered by the algorithm, the cumulative amount of spin loss from the single's previous peak spin count is the trigger. The allowable spin loss varies as a percentage, depending on the chart position.

In addition to making sure that only singles with significant downward movement become recurrent, this methodology also benefits slow-developing singles in several ways. For instance, the allowable spin loss (as a percentage) is very generous at the lower reaches of the chart to accommodate the lower spin counts. Additionally, if a single is at risk of being moved to recurrent status with two consecutive weeks of minor spin loss, it can still return to positive spin growth the following week, which will reset the clock.

## TRACtion Texas Digital Delivery Specs

Let Us To Send Your Project To Texas Red Dirt Radio And Beyond



### Email Blast Image

Format: Square Shape  
Preferred Size: 1500x1500px  
Minimum Size: 600x600px  
Preferred File Format: jpg

### Other Requirements

Bio copy (115 words)  
.wav file of song

**\$150.00** per digital delivery of your song  
**Upload at [www.tractiontx.com](http://www.tractiontx.com)**