

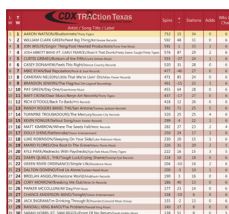
# TRACtion Texas

#1

Cody Johnson  
Wild As You  
Cojo Music LLC

## CONTENTS

### Charts



PAGE 2-3

Monitored Panel List

PAGE 4

Available for Airplay

PAGE 5

Chart Breakouts

PAGE 6



The TRACtion Texas weekly newsletter is published on Tues. evenings by CDX, Inc. — Connecting the music industry with Texas Red Dirt radio. For more information call [615-292-0123](tel:615-292-0123) or email chart director Jessie Scott-[jessiescott@cdxcd.com](mailto:jessiescott@cdxcd.com)

## Here Comes Summer



Hey Kiddos;

I am making an assumption that you got the weekend off, but since radio never sleeps I know some of you worked straight through it. For those who got three days off here is the big question, are you still relaxed today? I hope you can keep the feeling going through this whole short work week. It is hard with the mountain of work that awaits us all after a holiday weekend. Just trying to catch up on answering email can be a chore. Also, I hope that you took a moment to contemplate the sacrifice for those who gave their all in service to America. I hope you sent up a prayer of thanks to their families, also. Though a three-day weekend makes us happy, there is a somber side to Memorial Day that we must never forget.

That said, summer feels like it is finally here, whether unofficially or otherwise. What songs are feeling like they are tapping into the vibe for right now? Radio folks, what promotions do you have cooked up for the summer months? We would love to hear from you, so email me at [jessiescott@cdxcd.com](mailto:jessiescott@cdxcd.com). Let's all make the most of these glorious days.

On to this week's chart! Congrats to Cody Johnson for week three sitting in the #1 slot. We welcome Natalie Rose as the highest debut, and Jon Wolfe as greatest gainer and most added.

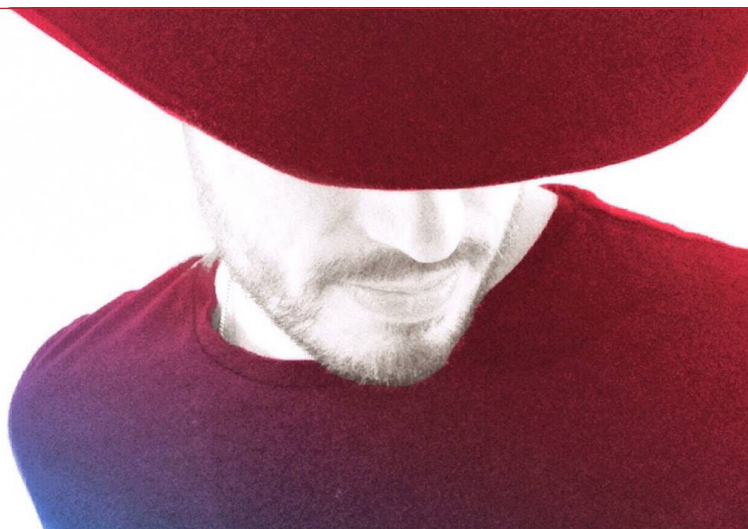
Looking forward,  
**Jessie Scott**


[jessiescott@cdxcd.com](mailto:jessiescott@cdxcd.com)

TRACtion Texas Chart Director

# DON'T MESS WITH TEXAS BRADLEY BANNING

**\*TOP 30 AND CLIMBING\***



L W	T W	TRAction  Empowering Artist Careers Artist / Song Title / Label	Spins	+ -	Stations	Adds	Wks On Chart
1	1	CODY JOHNSON/Wild As You/Cojo Music LLC	660	22	32	0	9
2	2	KYLE PARK/Don't Forget Where You Come From/Kyle Park Music	547	15	33	0	12
5	3	FLATLAND CAVALRY (FT. KAITLIN BUTTS)/A Life Where We Work Out/Flatland Cavalry Music	514	11	29	0	18
3	4	CODY JINKS/Wish You Were Here/Cody Jinks Music/Thirty Tigers	473	-51	32	0	15
6	5	SAM RIGGS/Second Hand Smoke/Deep Creek Records	462	13	30	1	11
4	6	WILLIAM CLARK GREEN/Creek Don't Rise/Bill Grease Records	453	-60	32	0	14
9	7	WHISKEY MYERS/Stone/Wiggy Thump Records	448	51	25	0	11
7	8	ZANE WILLIAMS/Hello World/Texas Like That Records	430	-15	30	0	14
11	9	CURTIS GRIMES/Right About Now/Curtis Grimes Music	426	49	33	1	8
12	10	JOSH WARD/Change My Mind/Buckshot Records	383	31	29	2	5
10	11	DREW FISH/Sounds Like A Plan/Drew Fish Band Music	382	3	25	2	16
13	12	JAMIE RICHARDS/When You Love Somebody/Jamie Richards Music	331	14	25	2	10
18	13	JON WOLFE/Baby This And Baby That/Fool Hearted Productions	287	85	24	7	6
14	14	TROY CARTWRIGHT/Nobody But You/Hard Luck Recording Company/Troy Cartwright Music	278	10	24	2	11
15	15	CASE HARDIN/Deep Blue Me/Case Hardin Music	252	6	22	0	19
17	16	STATESBORO REVUE, THE/Satisfied/Vision Entertainment	222	-5	21	1	17
16	17	DUSTIN SONNIER/People Like Me/Dustin Sonnier Music	221	-17	17	0	20
19	18	JESSE RAUB JR/She'll Put The Hurt On You/Jesse Raub Jr. Music	214	33	17	1	8
20	19	JASON CASSIDY/River Floatin'/JC Music	203	33	17	0	9
21	20	SHOTGUN RIDER/Sunlight/Torrez Music Group	188	22	12	0	10
23	21	DALTON DOMINO/Mine Again (I'd Be A Fool)/Lightning Rod Records	166	15	14	2	6
22	22	BAND OF HEATHENS, THE/Trouble Came Early/BOH Records	160	9	16	1	17
25	23	AUSTIN MEADE/Courage To Talk/Austin Meade Music	153	13	13	0	12
26	24	BRADLEY BANNING/Don't Mess With Texas/Bradley Banning Music	151	11	12	2	14
24	25	CODY WAYNE/Fly High/Broken String	147	6	17	1	8
27	26	BRUCE ROBISON/Rock and Roll Honky Tonk Ramblin' Man/Motel Time Music	141	16	8	1	9
28	27	BRANDON RHYDER/They Need Each Other/Brandon Rhyder Music	111	20	7	3	3
29	28	AARON COPELAND/Here She Comes/Aaron Copeland Music	105	16	9	1	7
32	29	JOHN BAUMANN/The Trouble With Drinkin'/Golden Spread Music	97	21	10	1	4
49	30	STEVEN JAMES & THE JADED/Dance With Me Tonight/Steven James & The Jaded Music	92	48	5	2	3

## TRAction Texas Chart Newsletter Rates

### Share Your Good News Through Us



#### TRAction Texas Full Page Ad

7.5 x 9.75 inches

CDX Distributed Client Rate: **\$750.00**  
for a one week run

CDX Non-Distributed Client: **\$1,000.00**  
for a one week run



#### TRAction Texas Banner Ad

7.5 x 2.76 inches

CDX Client Rate:  
1 Week: **\$250.00**  
4 Week: **\$800.00**

CDX Non-Client Rate:  
1 Week: **\$300.00**  
4 Week: **\$1,000.00**

#### TRAction Texas Digital Download & Ad Combo


1 Week: \$400.00


- Digital download release
- Newsletter banner ad


#### File Requirements


Resolution: At least 150 dpi

Formats: JPG, PDF, PNG

L W	T W	TRAction  Texas Empowering Artist Careers Artist / Song Title / Label	Spins	+ -	Stations	Adds	Wks On Chart
31	<b>31</b>	MARIO FLORES/Lonestar Heaven/Mario Flores Music	88	10	9	0	8
35	<b>32</b>	CALLAHAN DIVIDE/Holy Holly/Callahan Divide Music	85	16	6	1	7
30	<b>33</b>	ROBERT RAY/Can't Play Strait/Big R.I.G. Country, LLC	78	-7	6	1	5
39	<b>34</b>	DRAKE HAYES BAND/Grow Old With You/Drake Records	70	8	7	1	6
33	<b>35</b>	MIKE AND THE MOONPIES/Mockingbird/Smith Music Group	65	-9	5	0	25
42	<b>36</b>	COREY HUNT BAND/Song About Saturday Night/Super Secret Independent Records	62	5	5	0	4
46	<b>37</b>	PAULINE REESE/Save Your Breath/Pauline Reese Enterprises	61	12	8	2	2
40	<b>38</b>	BRETT HENDRIX/Summertime Queen/Brett Hendrix Music	61	0	5	2	8
41	<b>39</b>	DRUGSTORE GYPSIES, THE/Runnin' To/Edgewater Music Group	59	1	5	0	12
37	<b>40</b>	SCOTT TAYLOR BAND/Beautiful Sin/Scott Taylor Band	58	-5	6	0	8
--	<b>41</b>	NATALIE ROSE/Conformity/Natalie Rose Music	56	31	7	4	1
--	<b>42</b>	JAMIE TALBERT AND THE BAND OF DEMONS/Wildfire/Jamtal Records	55	24	6	1	1
34	<b>43</b>	RAY JOHNSTON BAND (FT. BRADY BLACK)/Watching the Lord Turn on the Lights/Lil Dude Records	54	-16	5	0	20
--	<b>44</b>	PAT GREEN/Drinkin' Days/Greenhorse Music	52	52	3	3	1
43	<b>45</b>	BELLAMY BROTHERS, THE/After The Storm/Raise Em Up Records/Nandar Entertainment	51	-5	6	0	3
45	<b>46</b>	THOMAS MICHAEL RILEY/Between the Tic 'n the Tock/Thomas Michael Riley Music	48	-2	6	0	4
47	<b>47</b>	RODNEY CROWELL (FT. ROSANNE CASH & JOHN PAUL WHITE)/It Ain't Over Yet/New West Records	46	-3	3	0	4
48	<b>48</b>	JAMES COOK/Flat Foolish and Despised/James Cook Music	44	-5	2	1	3
36	<b>49</b>	SAINTS ELEVEN/Coming Back Around/Saint's Eleven Music	43	-21	4	0	16
--	<b>50</b>	AARON EINHOUSE/The Richest Man/Aaron Einhouse Music	43	21	3	1	1

Number 1 = 

Most Added = 

Spin Gainer = 

Bubbling Under	Position
TANNER FENOGLIO/This Ain't The Movies/Tanner Fenoglio Music	<b>51</b>
SEAN MCCONNELL/Ghost Town/New Rounder	<b>52</b>
CODY SPARKS BAND/No Time/Cody Sparks Band Music	<b>53</b>
DIRTY RIVER BOYS/Down By The River/DRB Music	<b>54</b>
BUFFALO RUCKUS, THE/Born To Die/Shiner Records	<b>55</b>
JEREMY STEDING/Feels So Good To Be Back Home/Jeremy Steding Music	<b>56</b>
JEFF JACOBS BAND/Break His Heart Tonight/Jeff Jacobs Band Music	<b>57</b>
KIRK BAXLEY/Moving On/Kirk Baxley Music	<b>58</b>
CHAD COOKE BAND/Easy Way Home/King Hall Music	<b>59</b>
AMERICAN AQUARIUM (LIVE RADIO EDIT)/Northeast Texas Women/American Aquarium Music	<b>60</b>



## TRACtion : Texas Monitored Stations

KABW-FM	Abilene, TX	KITX-FM	Hugo, OK	KQSC-AM	Colorado Springs, CO	KUSH-AM	Cushing, OK
KACQ-FM	Lometa, TX	<u>KJDL-FM</u>	<u>Levelland, TX</u>	KQZQ-FM	Kiowa, KS	KUSQ-FM	Worthington, MN
KBSO-FM	Corpus Christi, TX	KKAJ-FM	Ardmore, OK	KRVF-FM	Kerens, TX	KVST-FM	Montgomery, TX
KBST-FM	Big Spring, TX	KKCN-FM	San Angelo, TX	KRVN-FM	Lexington, NE	KVWF-FM	Wichita, KS
<u>KERP-FM</u>	<u>Dodge City, KS</u>	KKDT-FM	Burdett, KS	KSAM-FM	Huntsville, TX	KWOX-FM	Woodward, OK
KFLP-FM	Floydada, TX	KMRK-FM	Odessa, TX	KSCH-FM	Sulphur Springs, TX	<u>KXKZ-FM</u>	<u>Ruston, LA</u>
KFTX-FM	Corpus Christi, TX	KNUE-FM	Tyler, TX	KSCN-FM	Pittsburg, TX	KYKM-FM	Yoakum, TX
KFWR-FM	Ft. Worth, TX	KOKE-FM	Austin, TX	KSNY-FM	Snyder, TX	KYKS-FM	Lufkin, TX
KFYN-FM	Paris, TX	KOLI-FM	Wichita Falls, TX	KSTV-FM	Dublin, TX	KYKX-FM	Longview, TX
KGVL-AM	Greenville, TX	KORA-FM	Bryan, TX	KTCS-FM	Ft. Smith, AR	KYYK-FM	Palestine, TX
KHKX-FM	Odessa, TX	KOUL-FM	Benavides, TX	KTCU-FM	Ft. Worth, TX		
KHLB-FM	Mason, TX	KOXE-FM	Brownwood, TX	KTFW-FM	Ft. Worth, TX		
KHYI-FM	Howe, TX	KOYN-FM	Paris, TX	KTTX-FM	Brenham, TX		
KIKK-FM (HD2)	Houston, TX	KPUR-FM	Canyon, TX	KTXM-FM	Hallettsville, TX		

Strikethrough = Removed    Bold = Newly Added    Underlined = Frozen this Week    Double Underlined = Frozen 2 Weeks

TRACtion only recognizes detections on songs that have been “fingerprinted.” We do our best to obtain and fingerprint all new releases; songs serviced through CDX are encoded automatically. Send a song MP3 file with title, artist, label, and add date to <https://spaces.hightail.com/uplink/tractiontx> for fingerprinting.

## Going for Adds

Date	Artist / Song Title / Label
<b>May 31st</b>	JOHNNY BUSH/I'll Be There/BGM Records
<b>June 6th</b>	THE WARHORSES/Last Goodbye/19 Charlie Records
<b>June 11th</b>	GRANGER SMITH/Happens Like That/Wheelhouse Records

Sign up for our weekly newsletter, which includes the CDX TRACtion Texas Chart at [www.tractiontx.com](http://www.tractiontx.com).



## Music Available from the CDX Digital Download Center

[Dylan Kenny/Bring It On Over](#)  
[Miles Williams/She Calls Me Daddy](#)  
[Justin Kemp Band/Don't Let Me Go](#)  
[John Hord/More Than I'm Used To](#)  
[BRutherz/See Clearly in the Dark](#)  
[Reid Farris/Don't Want To Want You](#)  
[Bruce Robison/MRock and Roll Honky Tonk Ramblin' Man](#)  
[Justin Kemp Band/Still Breathin'](#)  
[Callahan Divide/Holy Holly](#)  
[Bryan Adam Joyner/Beer Tastes Better With You](#)  
[Natalie Rose/Conformity](#)  
[Jenni Dale Lord Band/Country Rock and Roll](#)  
[Jeff Jacobs Band/Break His Heart Tonight](#)  
[Darrin Morris Band/Where Will I Be](#)  
[BRutherz/Without You Where Would I Be](#)  
[Bubba T.'s Honky Tonk Revival/Drink All Day](#)  
[Bannon Hancock/Carry Us On Through](#)  
[Jared LoStracco/Small Town Texas](#)

If you need access to the CDX Digital Download Center, please send an email request to Joe Kelly at [joe@cdxcd.com](mailto:joe@cdxcd.com).



Jake Worthington visited 104.7 KMOU in Roswell, NM. (L-R) Ryan Burden (KMOU), Jake Worthington, Blake Grinstead (Bass), Kerry West (Drums), and Jason Stringer (Guitar).



Reid Farris realizing you need gas in the tank when radio touring.



Matt Castillo of Matt & The Herdsmen (L) with Shotgun Steve Kelly of KKAJ in Ardmore, OK.

CDX TRACTION Texas offers digital distribution of new Texas Red Dirt music to all key radio programming decision makers, labels, publishing companies and music business execs. If you would like credentials to our proprietary InstaTrack download delivery system, please contact Joe Kelly ([joe@cdxcd.com](mailto:joe@cdxcd.com)) or Jessie Scott ([jessiescott@cdxcd.com](mailto:jessiescott@cdxcd.com)) 615-292-0123.



JOHN HORD  
MORE THAN I'M USED TO

**AVAILABLE NOW**

**M**ore Than I'm Used To  
JOHN HORD

Most Added	Adds
JON WOLFE/Baby This And Baby That Fool Hearted Productions	7
NATALIE ROSE/Conformity Natalie Rose Music	4
BRANDON RHYDER/They Need Each Other Brandon Rhyder Music	3
PAT GREEN/Drinkin' Days Greenhorse Music	3
JOSH WARD/Change My Mind Buckshot Records	2
DREW FISH/Sounds Like A Plan Drew Fish Band Music	2
JAMIE RICHARDS/When You Love Somebody Jamie Richards Music	2
TROY CARTWRIGHT/Nobody But You Hard Luck Recording Company/Troy Cartwright Music	2
DALTON DOMINO/Mine Again (I'd Be A Fool) Lightning Rod Records	2
BRADLEY BANNING/Don't Mess With Texas Bradley Banning Music	2

Greatest Spin Gainers	Increase
JON WOLFE/Baby This And Baby That Fool Hearted Productions	85
PAT GREEN/Drinkin' Days Greenhorse Music	52
WHISKEY MYERS/Stone Wiggy Thump Records	51
CURTIS GRIMES/Right About Now Curtis Grimes Music	49
STEVEN JAMES & THE JADED/Dance With Me Tonight Steven James & The Jaded Music	48
JESSE RAUB JR/She'll Put The Hurt On You Jesse Raub Jr. Music	33
JASON CASSIDY/River Floatin' JC Music	33
JOSH WARD/Change My Mind Buckshot Records	31
NATALIE ROSE/Conformity Natalie Rose Music	31
SHANE SMITH AND THE SAINTS New Orleans/Geronimo Records	31

## Chart Recurrent Methodology

When does a song move to recurrent on the chart? It is one of the more challenging issues we encountered in creating the CDX TRACtion Texas chart system. Rather than relying on subjective editorial decisions, we've chosen to automate this process using the weekly chart data as a marker.

We strive to avoid having singles past their prime create a logjam on the chart, because that stifles upward momentum for up-and-coming singles. But we also try to ensure that singles "on the bubble" are not removed prematurely. As long-time chart watchers know, singles often take a while to establish a solid base among early believers at radio before they truly find their legs. Due to any number of reasons, the path to peak chart position rarely includes straight-line, week-over-week spin and/or chart position growth.

On a monitored airplay chart like CDX TRACtion Texas, the reality is that new singles bounce around a bit spin-wise and position-wise, particularly in the lower half of the chart. Even small spin increases and decreases can be magnified as fairly significant up-or-down chart position moves.

With this in mind, the CDX TRACtion Texas recurrent policy grades each chart position on a curve, using an algorithm that considers the chart position and spin history for that song. Newly serviced singles are allowed 20 weeks to chart before being removed from chart consideration. Once a status change is actively being considered by the algorithm, the cumulative amount of spin loss from the single's previous peak spin count is the trigger. The allowable spin loss varies as a percentage, depending on the chart position.

In addition to making sure that only singles with significant downward movement become recurrent, this methodology also benefits slow-developing singles in several ways. For instance, the allowable spin loss (as a percentage) is very generous at the lower reaches of the chart to accommodate the lower spin counts. Additionally, if a single is at risk of being moved to recurrent status with two consecutive weeks of minor spin loss, it can still return to positive spin growth the following week, which will reset the clock.

## TRACtion Texas Digital Delivery Specs

Let Us To Send Your Project To Texas Red Dirt Radio And Beyond



### Email Blast Image

Format: Square Shape  
Preferred Size: 1500x1500px  
Minimum Size: 600x600px  
Preferred File Format: jpg

### Other Requirements

Bio copy (115 words)  
.wav file of song

**\$150.00** per digital delivery of your song  
**Upload at [www.tractiontx.com](http://www.tractiontx.com)**