

#1

The Randy Rogers Band
San Antone
Tommy Jackson Records

CONTENTS

Charts



PAGE 2-3

Monitored Panel List

PAGE 4

Available for Airplay

PAGE 5

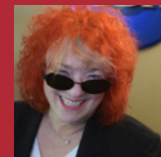
Chart Breakouts

PAGE 6



The TRACtion Texas weekly newsletter is published on Tues. evenings by CDX, Inc. — Connecting the music industry with Texas Red Dirt radio. For more information call [615-292-0123](tel:615-292-0123) or email chart director Jessie Scott-jessiescott@cdxcd.com

Sweetening The Pot!



Hey Kiddos;

It's week twelve, wow! I can't believe we have three months under our collective belts here at CDX TRACtion Texas! I can tell you it has been a wild ride, as we continue to grow this chart into the go-to Texas/Red Dirt Music airplay trends resource. I know the adoption process is slow, and that we have had some growing pains, but we are still fine tuning the chart and as I keep saying, it is a work in progress. That said, we still provide the most articulate information of anyone in the Texas Red Dirt world. It is actionable intelligence for touring artists, and all the folks that make up the support system of this format. We are proud to have jumped in feet first, and we continue to be secret cheerleaders for all of you ascending the chart to make your music dreams reality. Our congrats this week go to the Randy Rogers Band for taking the top spot! We have a mighty active top 5 this week, with Matt Kimbrow, Cody Jinks, Cody Johnson and Reckless Kelly, who also take top spin gainer honors again. A nod goes to Casey Donahew, who is tied with Jamie Richards as the most added. Jamie also has the highest debut on the chart this week.

We got some lovely feedback from Shayne Hollinger at KFWR, Ft. Worth who says, "Really digging this new chart. It's become the definition of a real chart, which this scene has needed for so long." Thank you Shayne!

A quick reminder that we would love to be your resource for distribution to radio. Our eleven hundred person list includes CMA International Country stations, and you know how much they love real deal music! We know you can distribute yourselves, so bringing something to you that enhances what you could do yourself is our goal. CDX TRACtion Texas is here to sweeten the pot with career building resources like airplay tracking that helps you to book better tours and ads that help convey your message and imaging to the growing Texas Red Dirt community. We aim to help you get where you are going!

Looking forward,
Jessie Scott

jessiescott@cdxcd.com

TRACtion Texas Chart Director



L W	T W	CDX TRAction Texas Empowering Artist Careers	Spins	+ -	Stations	Adds	Wks On Chart
Artist / Song Title / Label							
2	1	RANDY ROGERS BAND, THE/San Antone/Tommy Jackson Records	601	-87	32	1	12
1	2	MATT KIMBROW/Where The Seeds Fall/RROC Records	574	-143	32	0	12
5	3	CODY JINKS/I'm Not The Devil/Thirty Tigers/Cody Jinks Music	572	7	31	2	12
3	4	CODY JOHNSON/With You I Am/Cojo Music LLC	570	-66	31	0	12
10	5	RECKLESS KELLY/How Can You Love Him You Don't Even Like Him/No Big Deal	558	125	33	2	7
7	6	GREEN RIVER ORDINANCE/Simple Life/Residence Music	552	48	32	1	12
6	7	JAKE WARD/Lonely Street/Jake Ward Music	552	16	27	1	12
4	8	TURNPIKE TROUBADOURS/The Mercury/Bossier City Records	546	-60	29	0	12
9	9	GRANGER SMITH/If The Boot Fits/Wheelhouse (BBRMG)	459	4	29	0	12
11	10	MICKY & THE MOTORCARS/Sister Lost Soul/Micky & The Motorcars Music	453	60	25	1	11
8	11	KYLE PARK/Rednecks With Paychecks/Kyle Park Music/Thirty Tigers	450	-6	31	0	12
17	12	WHISKEY MYERS/Lightning Bugs And Rain/Wiggy Thump Records	378	81	23	1	9
12	13	JACK INGRAM/I'm Drinking Through It/Rounder/Concord Music Group	373	-14	24	1	12
14	14	FLATLAND CAVALRY/One I Want/Flatland Cavalry Music	371	62	22	3	11
19	15	ZANE WILLIAMS/Bringin' Country Back/Texas Like That Records	323	59	24	4	7
16	16	ROGER CREAGER/Wanna Wanna Bar/Fun All Wrong Records	318	12	20	1	9
13	17	MARK MCKINNEY (FT. BRI BAGWELL)/Why Haven't You Left Yet/Texas Evolution	303	-17	23	1	12
15	18	TROY CARTWRIGHT/Busted/Hard Luck Recording Company/Troy Cartwright Music	293	-14	23	0	8
21	19	SAM RIGGS/High On A Country Song/Deep Creek Records	284	25	21	5	4
25	20	CASEY DONAHEW/Kiss Me/Almost Country Records	278	39	22	7	5
24	21	JESSE RAUB JR/She Can Forgive/Jesse Raub Jr. Music	267	27	19	1	10
28	22	JON WOLFE/Boots On A Dancefloor/Fool Hearted Productions/Tone Tree Music	267	53	18	4	8
18	23	SEAN MCCONNELL/Holy Days/Rounder/Concord Music Group	255	-33	15	0	10
23	24	DUSTIN SONNIER/Whiskey Makes Her Miss Me So/Songs Of Sadness To Salve The Soul	245	-3	16	0	10
20	25	PROPHETS AND OUTLAWS/Party Like This/Seven Set Jam Records	238	-22	15	0	12
27	26	JERRETT ZOCH & THE OSR BAND/Everything I Need/Jerrett Zoch and OSR Band Music	230	15	13	1	6
29	27	JAKE WORTHINGTON/How Do You Honky Tonk/W3 Productions, LLC	226	18	15	2	5
22	28	CORY MORROW/Breaking Me Out/Write On Records	211	-39	18	0	12
26	29	MARIO FLORES/One Boot In The Grave/Mario Flores Music	191	-45	15	0	12
30	30	KYLIE FREY/Me and These Boots/Kylie Frey Music	175	-23	13	0	12



Jerrett Zoch & The OSR Band - "Everything I Need"

Adds And Conversion Now!



Radio Contact: Dillon at Steen Entertainment – dillon@steenentertainment.com

www.jerrettzochandtheosrband.com



L W	T W	CDX TRAction Texas Empowering Artist Careers Artist / Song Title / Label	Spins	+ -	Stations	Adds	Wks On Chart
37	31	CURTIS GRIMES/From Where I'm Standing/Curtis Grimes Music	175	57	11	4	2
31	32	AARON EINHOUSE/On & On/Vision Entertainment	171	-5	12	1	9
33	33	PARKER MCCOLLUM/All Day/PYM Music	148	4	11	0	12
34	34	AUSTIN MEADE/Born With A Broken Heart/Austin Meade Music	137	2	10	0	8
32	35	CHANCE ANDERSON BAND/Tonight/Vision Entertainment	130	-28	10	0	12
39	36	BRANDON JENKINS/Shadow Of A Broken Heart/Red Dirt Legend Recordings	128	21	9	1	4
35	37	DREW FISH/Small Price To Pay/Drew Fish Music	121	-6	7	0	6
41	38	DOC WEST/Love Like A Hurricane/Doc West Music	120	26	10	1	5
43	39	KIMBERLY DUNN/Traffic/Kimberly Dunn Music	118	27	12	3	2
--	40	JAMIE RICHARDS/Second Hand Smoke/Jamie Richards Music	104	104	7	7	1
38	41	KALEB MCINTIRE/Find Another Baby/Rockin' Doc Music	101	-12	8	0	4
44	42	CASE HARDIN/Sign Of A Fool/Case Hardin Music	96	8	8	0	3
45	43	JUNIOR GORDON/Mexicoma/Junior Gordon Music	94	11	8	1	8
36	44	CODY WAYNE/Take Me Drunk/Broken String	89	-34	10	0	7
--	45	LUKE ROBINSON/She Drinks Alone/Luke Robinson Music	85	25	6	2	1
--	46	DERYL DODD/The Ride/Little Red Truck Music	81	81	6	6	1
42	47	DARWIN MACON/This Ain't The Love (I signed Up For)/Macon Bacon Records	81	-11	4	0	6
40	48	JB AND THE MOONSHINE BAND/Mixtape/Light It Up Records	78	-20	4	0	9
--	49	KEVIN FOWLER/Texas Forever/Kevin Fowler Records	76	76	4	4	1
47	50	GENEVIEVE ALLEN/Rob That Train/Landstar Entertainment	75	-4	5	0	6

Number 1 =

Most Added =

Spin Gainer =

Bubbling Under	Position
JOSH FULLER/Small Town Friday/indieExtreme/Fuller Ray Productions	51
JONATHAN TYLER/Honey Pie/Timeless Echo/Thirty Tigers	52
TJ BROSCOFF/Should've Been Mine/TJB Records	53
REVEREND'S DAUGHTER/Caroline/Reverend's Daughter Music	54
DALTON DOMINO/July/Lightning Rod Records	55
AARON WATSON/That Look/BIG Label Records/Thirty Tigers	56
MAX STALLING/A Night's Pay In My Boot/Blind Nello Records	57
ZAC STOKES/Woman Like You/Zac Stokes Music	58
NATHAN BONNES/Back In My Arms Again/Nathan Bonnes Music	59
SMOKE WAGON/Strong Man/Smoke Wagon Music	60

TRAction Texas Chart Newsletter Rates

Share Your Good News Through Us



TRAction Texas Full Page Ad

7.5 x 9.75 inches

CDX Distributed Client Rate: **\$750.00**
for a one week run

CDX Non-Distributed Client: **\$1,000.00**
for a one week run



TRAction Texas Banner Ad

7.5 x 2.76 inches

CDX Client Rate:
1 Week: **\$250.00**
4 Week: **\$800.00**

CDX Non-Client Rate:
1 Week: **\$300.00**
4 Week: **\$1,000.00**

TRAction Texas Digital Download & Ad Combo

1 Week: \$400.00

- Digital download release
- Newsletter banner ad

File Requirements

Resolution: At least 150 dpi
Formats: JPG, PDF, PNG

TRACtion Texas Monitored Stations

KABW-FM	Abilene, TX	KIKK-FM (HD2)	Houston, TX	KRVA-FM	Campbell, TX	KVST-FM	Montgomery, TX
<u>KACQ-FM</u>	<u>Lometa, TX</u>	KITX-FM	Hugo, OK	KRVF-FM	Kerens, TX	KVWF-FM	Wichita, KS
KBSO-FM	Corpus Christi, TX	KJDL-FM	Levelland, TX	KRVN-FM	Lexington, NE	<u>KWOX-FM</u>	<u>Woodward, OK</u>
KBST-FM	Big Spring, TX	KKAJ-FM	Ardmore, OK	KSAM-FM	Huntsville, TX	KXKZ-FM	Ruston, LA
<u>KERP-FM</u>	<u>Dodge City, KS</u>	KKDT-FM	Burdett, KS	KSCH-FM	Sulphur Springs, TX	KYKM-FM	Yoakum, TX
KFLP-FM	Floydada, TX	KMRK-FM	Odessa, TX	KSCN-FM	Pittsburg, TX	KYKS-FM	Lufkin, TX
KFTX-FM	Corpus Christi, TX	KNUE-FM	Tyler, TX	KSNY-FM	Snyder, TX	KYKX-FM	Longview, TX
KFWR-FM	Ft. Worth, TX	KOKE-FM	Austin, TX	KSTV-FM	Dublin, TX	KYYK-FM	Palestine, TX
KFYN-FM	Paris, TX	KOLI-FM	Wichita Falls, TX	KTCS-FM	Ft. Smith, AR		
KGVL-AM	Greenville, TX	KORA-FM	Bryan, TX	<u>KTCU-FM</u>	<u>Ft. Worth, TX</u>		
KHKX-FM	Odessa, TX	KOUL-FM	Benavides, TX	KTFW-FM	Glen Rose, TX		
KHLB-FM	Mason, TX	KOXE-FM	Brownwood, TX	KTTX-FM	Brenham, TX		
KHST-FM	Lamar, MO	KOYN-FM	Paris, TX	KTXM-FM	Hallettsville, TX		
KHYI-FM	Howe, TX	KPUR-FM	Canyon, TX	KUSQ-FM	Worthington, MN		

Strikethrough = Removed Bold = Newly Added Underlined = Frozen this Week

TRACtion only recognizes detections on songs that have been “fingerprinted.” We do our best to obtain and fingerprint all new releases; songs serviced through CDX are encoded automatically. Send a song MP3 file with title, artist, label, and add date to <https://spaces.hightail.com/uplink/tractiontx> for fingerprinting.

Going for Adds

Date	Artist / Song Title / Label
Sept. 23	CHARLIE & THE REGRETS/Time Moves Slow/Edgewater Music TURNPIKE TROUBADOURS/Come As You Are/The Next Waltz DALTON DOMINO/July/Lightning Rod Records COLE RISNER/Gun Barrel City/Cole Risner Music
Sept. 26	MIKE RYAN/New Hometown/Rock and Soul Records
Sept. 30	DIRTY RIVER BOYS/Simplified/DRB Music

Sign up for our weekly newsletter, which includes the CDX TRACtion Texas Chart at www.tractiontx.com.

GILLIGAN PROMOTIONS

Gilligan Promotions LLC would like to welcome Jessie Scott and the CDX Traction Texas Chart. Congratulations on a great start and wishing for a long & bright future in Texas Music!

WWW.GILLIGANPROMOTIONS.COM | 469.287.7040 | DAVID@GILLIGANPROMOTIONS.COM

Music Available from the CDX Digital Download Center

[Cody Jinks/I'm Not The Devil](#)

[Jennie Dale Lord Band/Me and My Brother](#)

[Jerrett Zoch & The OSR Band/Everything I Need](#)

[Bryan Adam Joyner/Cried When He Died](#)

[Brutherz/She's Got Pride](#)

[Stephen Chadwick/She Just Might Be A Love Song](#)

[Miles Williams/Where The Buses Don't Run](#)

[Sam Riggs/High On a Country Song](#)

[The Buffalo Ruckus/Hills and Valleys](#)

[Donovan Lee/She Stays](#)

[Ronnie Dean Tinsley/Must Be Nice](#)

[Hunter Rea Band/Memories](#)



Mark Powell, Jesse Raub Jr., Drake Hayes, and Brandon Steadman on stage at the **Rockett Cafe & Club** for the **Ranch Roadhouse** radio show with **Jim Nash**.

If you need access to the CDX Digital Download Center, please send an email request to Joe Kelly at joe@cdxcd.com.



Cody Jinks taking time to meet the fans at **The Orange Peel** in **Asheville, NC**.



Talk about building a wall! **Jeremy Steding** with **Craig Vaughn** at **KPUR**

CDX TRACtion Texas offers digital distribution of new Texas Red Dirt music to all key radio programming decision makers, labels, publishing companies and music business execs. If you would like credentials to our proprietary InstaTrack download delivery system, please contact Joe Kelly (joe@cdxcd.com) or Jessie Scott (jessiescott@cdxcd.com) 615-292-0123.

TRACtion Texas Digital Delivery Specs

Let Us To Send Your Project To Texas Red Dirt Radio And Beyond



Email Blast Image

Format: Square Shape
Preferred Size: 1500x1500px
Minimum Size: 600x600px
Preferred File Format: jpg

Other Requirements

Bio copy (115 words)
.wav file of song

\$150.00 per digital delivery of your song
Upload at www.tractiontx.com

Most Added	Adds
CASEY DONAHEW/Kiss Me Almost Country Records	7
JAMIE RICHARDS/Second Hand Smoke Jamie Richards Music	7
DERYL DODD/The Ride Little Red Truck Music	6
SAM RIGGS/High On A Country Song Deep Creek Records	5
ZANE WILLIAMS/Bringin' Country Back Texas Like That Records	4
JON WOLFE/Boots On A Dancefloor Fool Hearted Productions/Tone Tree Music	4
CURTIS GRIMES/From Where I'm Standing Curtis Grimes Music	4
KEVIN FOWLER/Texas Forever Kevin Fowler Records	4
KODY WEST/Playing Cards Kody West Music	4
FLATLAND CAVALRY/One I Want Flatland Cavalry Music	3

Greatest Spin Gainers	Increase
RECKLESS KELLY/How Can You Love Him You Don't Even Like Him No Big Deal	125
JAMIE RICHARDS/Second Hand Smoke Jamie Richards Music	104
WHISKEY MYERS/Lightning Bugs And Rain Wiggy Thump Records	81
DERYL DODD/The Ride Little Red Truck Music	81
KEVIN FOWLER/Texas Forever Kevin Fowler Records	76
FLATLAND CAVALRY/One I Want Flatland Cavalry Music	62
MICKY & THE MOTORCARS/Sister Lost Soul Micky & The Motorcars Music	60
ZANE WILLIAMS/Bringin' Country Bac Texas Like That Records	59
CURTIS GRIMES/From Where I'm Standing Curtis Grimes Music	57
JON WOLFE/Boots On A Dancefloor Fool Hearted Productions/Tone Tree Music	53

Chart Recurrent Methodology

When does a song move to recurrent on the chart? It is one of the more challenging issues we encountered in creating the CDX TRACtion Texas chart system. Rather than relying on subjective editorial decisions, we've chosen to automate this process using the weekly chart data as a marker.

We strive to avoid having singles past their prime create a logjam on the chart, because that stifles upward momentum for up-and-coming singles. But we also try to ensure that singles "on the bubble" are not removed prematurely. As long-time chart watchers know, singles often take a while to establish a solid base among early believers at radio before they truly find their legs. Due to any number of reasons, the path to peak chart position rarely includes straight-line, week-over-week spin and/or chart position growth.

On a monitored airplay chart like CDX TRACtion Texas, the reality is that new singles bounce around a bit spin-wise and position-wise, particularly in the lower half of the chart. Even small spin increases and decreases can be magnified as fairly significant up-or-down chart position moves.

With this in mind, the CDX TRACtion Texas recurrent policy grades each chart position on a curve, using an algorithm that considers the chart position and spin history for that song. Newly serviced singles are allowed 20 weeks to chart before being removed from chart consideration. Once a status change is actively being considered by the algorithm, the cumulative amount of spin loss from the single's previous peak spin count is the trigger. The allowable spin loss varies as a percentage, depending on the chart position.

In addition to making sure that only singles with significant downward movement become recurrent, this methodology also benefits slow-developing singles in several ways. For instance, the allowable spin loss (as a percentage) is very generous at the lower reaches of the chart to accommodate the lower spin counts. Additionally, if a single is at risk of being moved to recurrent status with two consecutive weeks of minor spin loss, it can still return to positive spin growth the following week, which will reset the clock.

CDX TRACtion Texas Client Benefits

- Extensive distribution reach via a dedicated digital e-blast to over 1100 radio stations and executives in the Texas music industry. **AND** we also service your single to CMA member international broadcasters.
- Your single is housed in our extensive download center database in perpetuity, where radio programmers have access to 25 years of country music history.
- CDX clients receive discounted ad pricing on the TRACtion Texas Chart newsletter and website.
- CDX clients receive one month of free tracking off their monthly subscription to our TRACtion Texas airplay monitoring service (\$195 per month for unlimited access) or we'll provide weekly emailed single song reports for \$50 a month.
- Participation in Texas Red Dirt Spotify Playlists which are promoted throughout social media.

WWW.TRACTIONTX.COM